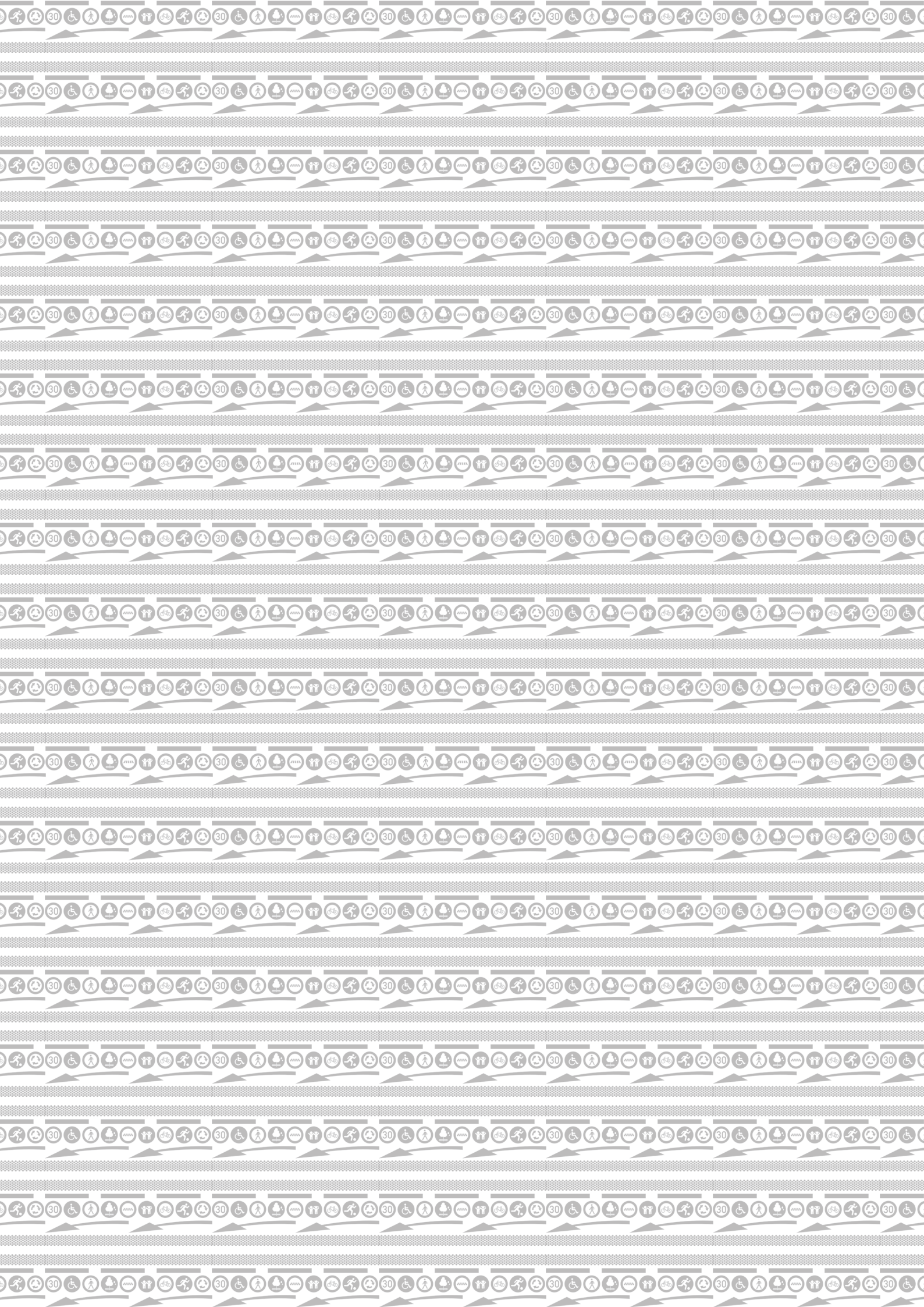


Marking the  
future with you







No road is  
long with  
good  
company





# We are Geveko Markings

Marking the future with you

Geveko Markings Group develop, manufacture, and distribute horizontal markings in any size, material, colour, or form that meet the requirements of our customers, surface owners, and end-users in the segments we serve.

We mainly focus on areas of application where our products must perform to strict standards and under demanding circumstances such as high traffic volumes and different weather and climate conditions.

Our markings enable safe, sustainable, and efficient mobility in more than 80 countries around the world.

Our markings also safeguard communities and guide people to their destinations, and they transform surfaces into decorative, colourful, and playful environments. Building on our experience and deep knowledge of the road markings industry, it is our continued mission to make high-quality materials that guide, inspire, and protect people all over the world.

Since our company was founded almost a century ago, we have taken part in forming and developing the mobility infrastructure. First in Scandinavia, then on a European level, and in more recent decades increasingly on a global scale.

When it comes to raising performance standards that improve traffic safety and consequently save lives, we are among the leaders within our industry. This is also the case when it comes to providing marking products and solutions that increase guidance and flow of traffic. Furthermore, Geveko Markings is a leading provider of materials that are highly durable with a focus on total cost of ownership and improvement of environmental impact.

## Our history

Since being founded in 1924 in Sweden, we have added a lot of chapters to the Geveko Markings story. From small beginnings in Gothenburg to today, where we are a global leading brand within horizontal outdoor markings with nearly a century of expert knowledge behind us.

When Gunnar Bergendahl first started the company he had one single goal in mind; to provide his customers with the most durable materials in the world.

This was the beginning of the Geveko Markings you know today. At first, Bergendahl's company was mainly a manufacturer of asphalt, but the focus later changed towards the manufacturing of road marking materials.

A lot of other things have changed since then, but the values upon which our company is built remain the same. The passion for what we do still drives us in our everyday work and in our aspiration towards creating the best horizontal marking solutions together with our partners and customers.



*“By driving excellence across Geveko Markings we will be the best markings material supplier in the eyes of our customers”*

That is our vision. And it is also the promise we make to our customers about what to expect from us. From a single road, playground or town square, to city-wide infrastructure, our products and solutions and your ideas and work help people get safely to where they need to be - and that is why we want to be marking the future with you.

## Why work with us



### Consistent quality

Quality is key for us! At Geveko Markings, we take the quality of our products and operations seriously. All of our sites are ISO9001 certified and our formulations and production processes ensure products that perform consistently to the specified requirements and expectations. As a customer, you can then concentrate on managing your own activities resting assured that you are supported by a high-quality, hassle-free supplier.



### Global supply chain

Always get your markings on time! Thanks to our 14 production and distribution centers and a strong global supplier network, we have a flexible distribution set-up that is your guarantee for fast deliveries on all of our main markets. In cases of global raw material shortages and supply chain disruptions, our production set-up and wide supplier network act as a buffer and provide us clarity, certainty, and flexibility, so we meet customer demands.



### Local presence

We know you and your market! With salespeople and technical employees located in more than 20 countries, we make sure to stay close to our customers and end-customers, and we keep up to date on local requirements and trends to better understand and support your business and journey.



### 90-year industry experience

Benefit from our expertise! With nearly a century of experience, we have a long history and deep knowledge of the road markings industry that we use every day to our customers' advantage.



### Strong product portfolio

Get all your marking materials in one place! With our full range of combinable products and solutions, we cover all your marking needs while meeting all national market requirements. By having one professional main supplier of marking materials, you can focus your time and efforts on managing and growing your business.

## Local commitment on a global scale

Our local presence in each market is serviced by our strong global network

At Geveko Markings, it has always been important for us to act as a local player in the markets where we operate. We believe this is the best way to establish close, long-term relationships with our customers and local stakeholders. Therefore, we have our own sales and technical representatives in more than 20 countries around the globe. This gives us an in-depth understanding of local customer needs, demands, regulations and requirements, which we use to ensure the success of our customers and the communities in which we operate.

Although we act local, our customers benefit from a global supply chain, consisting of 14 production and distribution centres situated in Europe, USA, Asia Pacific, and North Africa. Furthermore, we have a wide network of approved suppliers with whom we have long-standing relations. Our international production and distribution footprint enable us to meet customer demands for quick deliveries, and together with our network of suppliers, we have a very high supply chain security for the benefit of our customers.

Thanks to our global presence, our customers and stakeholders also benefit from our ability to provide insights, innovations, and solutions from other markets.

## We are the experts

Innovative products, solutions and expertise

Developing high-performing and durable materials as we do at Geveko Markings is complex, but the reason we do it is simple. We want to make resilient, quality materials that keep people safely on track wherever they are headed. To us, research and development of our products is a combination of experienced and skilled employees, modern production and laboratory facilities, continuous testing, practical road trials, strong supply network, and of course customer cooperation and feedback.

We put the same amount of work in all stages of the products' value chain. From the initial cooperation with raw material suppliers to keeping up-to-date on the latest application technologies. When customers and end-customers are looking

for a solution with a specified performance or feature, we do our utmost to ensure that our offering fulfill and exceed these expectations.

By doing so, we believe that our innovative products, solutions and expertise create safe, sustainable, and efficient mobility for everyone.





## A sustainable way of doing business

At Geveko Markings, we see the bigger picture where a mark increases safety and guides, inspires, and protects millions of people every single day. That is why we consider road markings to be life savers. A very important part of our raison d'être is to increase traffic safety in places where our products can make a real difference.

First of all, our road markings help control and separate traffic as well as create safe zones for unprotected road users such as pedestrians, cyclists, prams, and wheelchairs. Secondly, our tactile road markings alert visually impaired to proceed with caution, increasing their independence and life quality. Finally, our products make the traffic flow efficiently which is a very important part of a functional infrastructure in a world that is constantly moving while focusing on minimising the environmental impact on the planet.

To enable a future with safer, more sustainable, and more efficient mobility, it is essential that we take on a holistic approach. Both when it comes to our business, our actions, and the impact we leave behind. Our approach must support growth as well as improvements in profits, environmental impact, social impact, and governance. Only with a holistic approach that takes all these aspects into account, can we ensure that our business is sustainable so we can continue **"Marking the future with you"**.







## To guide us on our continued journey

We use our four Geveko Markings values as a compass for guiding our employees

### We are ambitious

At first glance, it may seem like just line markings on a surface, but there is a lot more going on underneath. Our markings are the result of skilled and ambitious employees whose experience, expert knowledge and passion is your guarantee for high-quality products and customer service.

### We think smarter

Although we are rooted in our history, we are always moving forward. At Geveko Markings, we strive to push the boundaries of what is possible by developing high-quality road markings that defines tomorrow's infrastructure. Therefore, we keep testing, developing, and improving our products and processes to always be ahead of the curve and make sure that our activities benefit all our stakeholders.

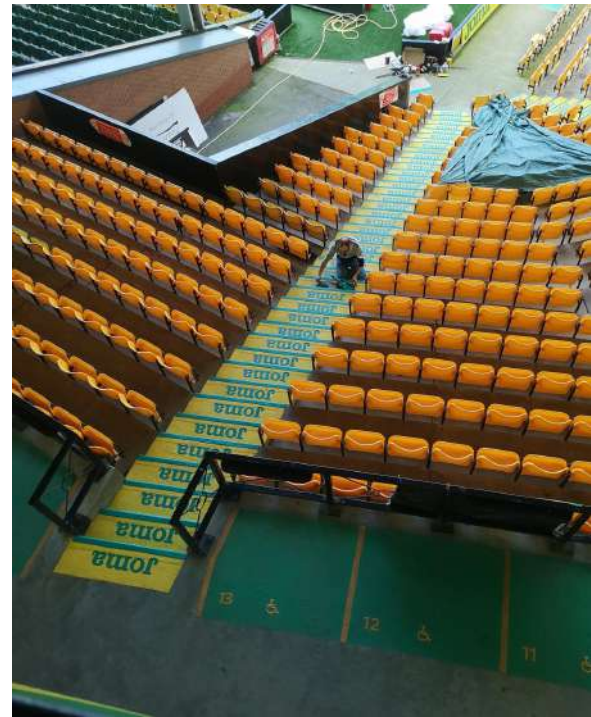


### We are committed

We believe in keeping loyal and long-term relationships with our customers. Indeed, this represents one of the cornerstones of our business. Therefore, our customers' satisfaction is always our top priority and everything we do is done with the aim of bringing greater value to our customers.

### We are reliable

We believe that open, honest, and direct communication paves the way for excellence. Therefore, we practice a simple, but powerful strategy. We do what we say! As simple as that. We want to be a company you can rely on – both as a customer, employee, and supplier. Therefore, we act with commitment and responsibly in all aspect of our business.



Safety markings with good slip resistance and contrast



## Our solutions

Providing world class road marking and decorative surfacing solutions

# 1

### REGULATORY TRAFFIC

Our extensive product range specifically for the road helps guide road users and ease the traffic flow by means of signs, symbols and highly visible line markings. The majority of our products are certified and approved according to national regulations on performance and design.

# 2

### TRAFFIC AREA & PARKING

Lanes, pedestrian crossings and parking areas can be made safer and more noticeable by adding colour and friction. Our area solutions include a wide range of high-quality materials to cover this requirement.

# 4

### ACCESSIBILITY & SAFETY

Whether you are looking to safe-proof steps, create contrast or warn and guide visually impaired in traffic, we have the products for the purpose. Our product range includes everything from anti-slip material, warning signs to tactile markings.

# 5

### ROAD & SURFACE REPAIR

Our range of repair solutions offers easy ways to fix cracks, potholes and other minor damages on roads and surfaces. With a minimal downtime of traffic, the fast-applied materials can help prolong the life of damaged roads.



## 3. DECORATIVE SURFACING

Our decorative solutions can make dark and dull surfaces stand out. Whether it is playground games, decoration of a public area, or branding of a commercial environment, our colourful and visually stunning products offer modern and creative solutions that fit your needs.

## 6. EVENTS, SPORTS & SPECIALITIES

This is our range of materials for marking those special occasions and events. Whether you want to leave a permanent impression on the roads or just a temporary one, we have the solution for you.

# Regulatory traffic

Meeting the exacting rules and regulations on every road

In our solution for regulatory traffic, you will find markings to suit all types of challenges and applications specifically for the road.

Our range include high-quality markings in preformed, hot-applied, paint and plural components. Whether you are looking for long lasting markings for heavy traffic, signs and

symbols to guide road users on the way, or markings that are highly visible in dark and wet conditions, you can count on our marking materials to get the job done to ensure a better and safer traffic flow world wide.

## The mark of quality

Before a road marking material can be applied on public roads, it must be tested, certified and classified to establish the level of quality and performance. In short, the certification of a product, is a mark of quality. It guarantees that a product conforms to all the technical requirements defined by official standards and certification rules. The whole certification process is of course handled by an independent and impartial certification body. These extensive test procedures allow us to validate how the products perform in "real life" when exposed to many types of stress. From changing weather to wear and tear from daily usage – all of this should be taken into account in the testing and certification process. This provides us with the best prerequisites for ensuring a safer road for all of us.



## Around the world certification

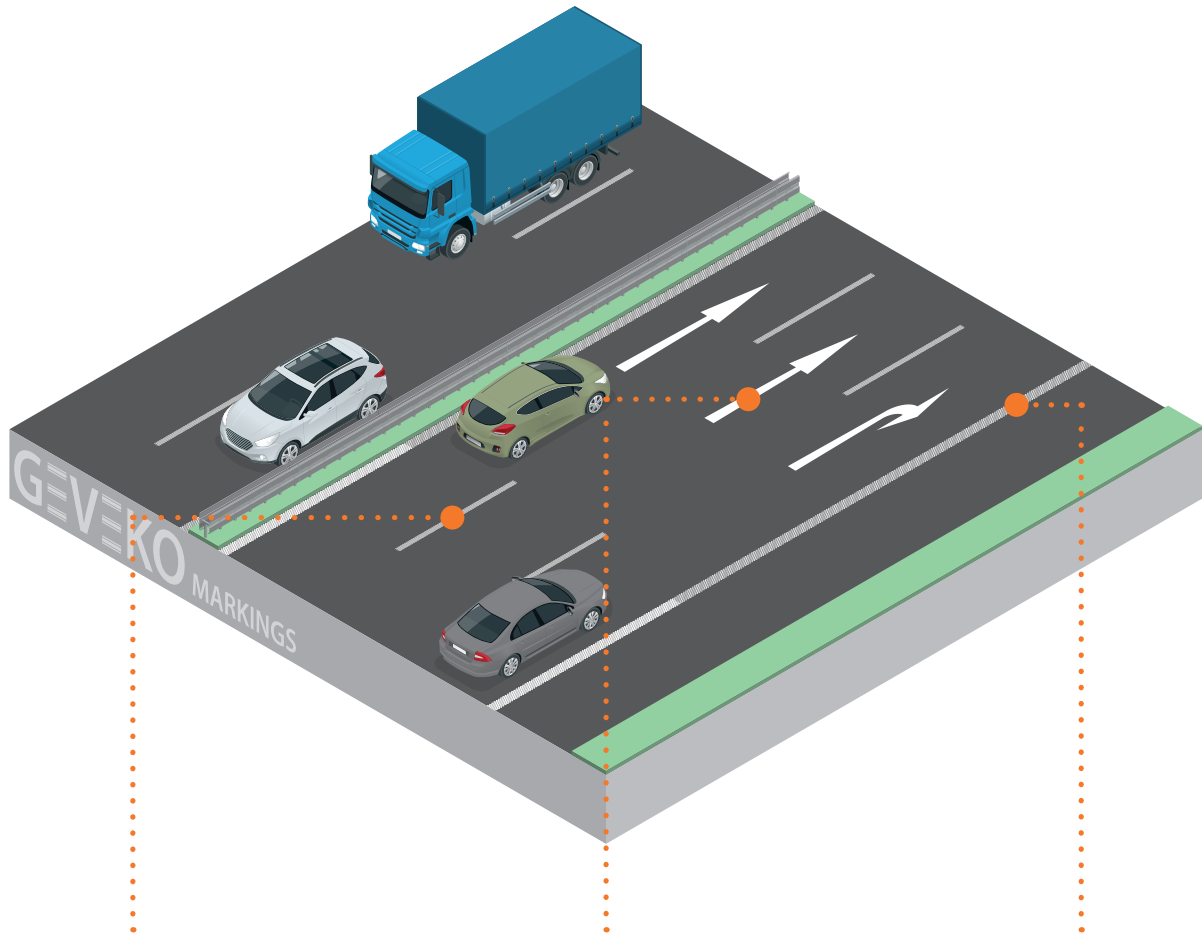
All our materials, have been tested and authorised according to several international programmes and are used in many different countries.

- **Australia:** APAS
- **Belgium:** Copro
- **Czech Republic:** ZDZ
- **Denmark:** VTI / Ramböll (Test field Denmark)
- **France:** Ascquer / Afnor
- **Germany:** BASt (Wear simulator)
- **Netherlands:** Kiwa
- **Norway:** VTI / Ramböll (Test field Norway)
- **Poland:** IBDiM
- **Slovakia:** VUD
- **Spain:** Aetec (Wear simulator)
- **Sweden:** VTI / Ramböll (Test field Norway)
- **UK:** BBA / BSI
- **USA:** AASHTO / NTPEP



## The solution

All you need for your road marking requirements



### EDGE LINES, CENTRE LINES AND LANE MARKINGS

Visible linear markings are crucial in order to ensure that drivers stay in the right lane and are able to find their way even in bad weather conditions. We specifically recommend our hot-applied thermoplastic or plural component systems, which can be applied as both flat and structured markings.

### ARROWS, LEGENDS, LETTERS AND NUMBERS

To help drivers navigate in traffic and ease traffic flow on busy roads legends, letters and numbers can be a great way to offer guidance. Our preformed marking range includes all types of symbols to cover this need. The markings have a high level of retroreflection which means that they are also visible at night.

### TYPE II MARKINGS

Characterised by their high level of visibility in wet conditions. Structured markings are designed to drain away water from its surface when it rains, which leads to improved retroreflection. Most structured markings will also generate a rumbling effect when driven over, warning drivers if they happen to drift across road lines.

#### Areas of application



Motorways



Roads



City Roads



Airfields



## Traffic area & parking

Making selected areas stand out to guide and protect road users

Some areas in traffic needs extra attention. Our extensive product range for traffic and area markings lets you choose from a selection of products that will make any area stand out, increase safety and improve flow.

Adding colour and friction is a great way to upgrade the road surface and lower the risk of accidents in these types of areas. This can be achieved with our range of MMA, high friction and preformed materials. By enhancing areas in terms of striking colours and skid-resistance, you can make sure that they are both noticeable and safe for all road users.

### What is micromobility?

Bicycles are a big part of micromobility, but it covers other modes of electric or human powered transport as well. Micromobility vehicles are usually characterised by going at a low (25 km/h) to medium (45 km/h) speed and includes, for example, e-bikes and e-scooters.

The purpose of micromobility markings is to separate vehicles in this category from the rest of the road where cars and other engine powered vehicles are usually dominant.

### Increased safety for cyclists

In the German city of Bremen, bicyclists can enjoy a safe ride on these bright red lanes. The aim of this particular application done by AVB Bremen was to make the bike lanes much easier for the car drivers to see.

These applications are a prime example of the huge micromobility trend that is happening right now. By combining a bright red surface with easily identifiable symbols, they help increase safety for bike riders and provide them with a lane that is designated only for them.

The eye-catching markings turned out to be such a success in Bremen that it subsequently has led to more markings like these in the city.



### The future is electric

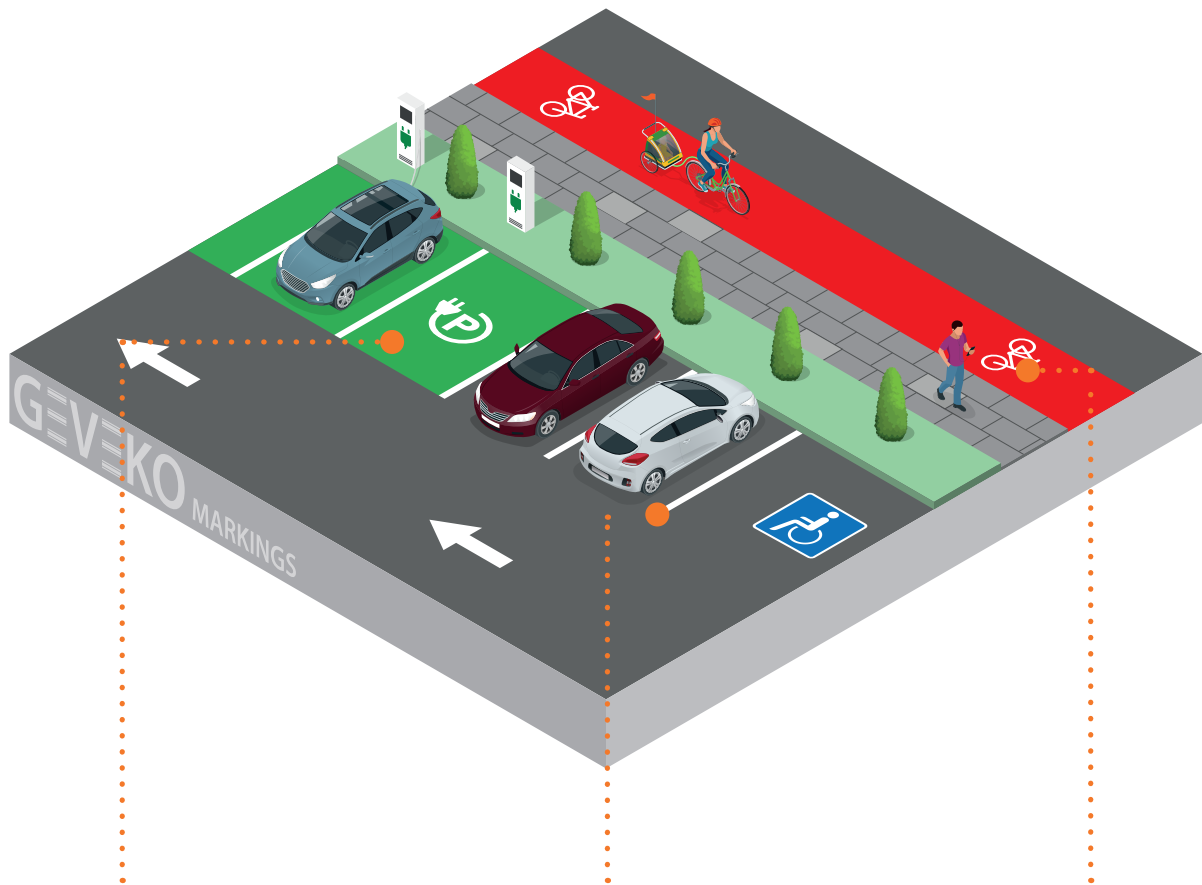
Societal pressures for more environmentally friendly car solutions are growing, and each year car manufacturers add more electric vehicles to their portfolio. With more and more electric and hybrid cars hitting the roads, the demand for electric parking spaces will be ever increasing.

The possibilities when it comes to designing a parking space are endless. However, green painted parking tiles with a white or coloured symbol placed on top is a popular solution. This is an easily recognisable type of marking that gives clear associations to a 'green choice'.



## The solution

All you need for your traffic area and parking requirements



### COLOUR DEMARCATION

Our colourful cold plastics can easily make parkings spaces stand out while adding skid-resistance to the surface. When doing a small number of parking spaces, you can easily hand apply PlastiRoute™ Rollgrip/Rollplast with a paint roller. For fast application on larger areas, use Spraygrip or Sprayplast which is applied with our AreaSpray™ machine.

### LINING

Lines on the parking lot is necessary to clearly mark the individual parking stalls. A clear separation makes it easy to navigave the parking lot which helps to avoid confusion and keep the traffic flow organised. This is easily done with our PREMARK™ lines that separates each parking spot in no time.

### SYMBOLS

Our PREMARK™ symbols are known for their high durability and are developed for permanent use outdoors. They go perfectly on top of a brightly coloured surfaces creating eye-catching and practical parking solution. Be it handicap signs, electric charging symbols or arrows for guidance, everything can be made in this preformed material.

#### Areas of application



Preferential lanes



High Friction Areas



Micromobility



Parking Areas



Commercial areas

## Decorative surfacing

Transforming all types of areas into safe and visually stunning spaces

Our decorative markings can add a splash of colour or a creative look and feel to any dull surface. Our games activate children and enable playful learning. We offer products for bespoke branded environments for surface owners that desire to differentiate and enhance their customer experience. Our resin surfacing systems offer visually stunning and functional paving solutions for both private and public applications.

No matter what solution you choose, you do not have to worry about safety issues either. Our products come with anti-slip features, so surfaces are safe to walk and play on. Durability is

neither an issue as our product technology comes from the road marking world, where they are designed to withstand immense wear and tear.

With our combination of products, the options are endless – just give free reign to your imagination.

### Making an entrance

By combining our PlastiRoute™ SprayGrip and DecoMark™ materials, the entrance at Swepac was given a make-over in line with the company's brand.

When visitors step onto the premises of the Swedish company, Swepac, they are met with a visually aligned first impression. The company colours and logo not only adorn the company buildings but can now also be found on the surface leading up to the main entrance.

The red logo was made of our DecoMark preformed thermoplastic and was designed specifically to replicate Swepac's font and brand colours. Our preformed products can be easily applied directly on top of our PlastiRoute products, creating a practical and visually pleasing main entrance.



### Active and safe learning

Whether it be to encourage counting or reading, or simply for play, DecoMark™ provides the perfect solution. Designs can be supplied in a preformed, easy-to-lay 'kit' or in packs of sheets, lines, or rolls for bespoke application.

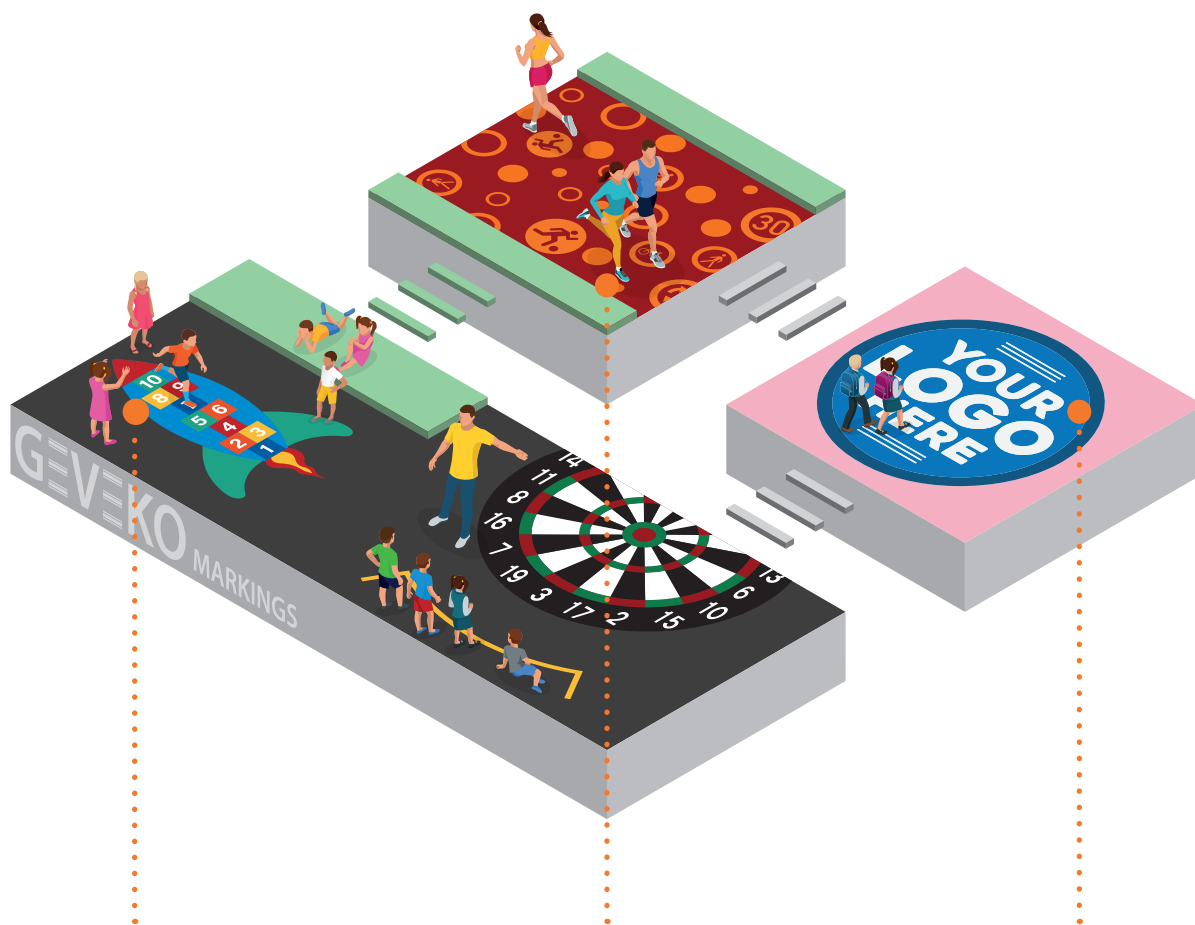
There is also no need to worry about safety issues either. Our anti-slip materials minimise the risk of slippery surfaces and make it a safe place for the children to play.





## The solution

All you need for your decorative surfacing requirements



### PLAYGROUND GAMES

We believe that playgrounds should be a place for fun and creativity. With our selection of decorative markings, you can make the surface your canvas. For instance, you can create a colourful cold plastic undercoat and combine with preformed DecoMark™ on top. Our high friction materials minimise the risk of slippery surfaces and make it a safe place for the children to play.

### PUBLIC DECORATION

Public areas such as plazas, paths and town squares can easily become a uninspiring 'sea of grey' which is a shame since they are used and seen by many people every day and have the potential of becoming a recognisable landmark of the area. In this case, just a bit of creativeness can make a world of difference and our range of materials makes almost everything possible.

### BRANDING

Our range of materials for decorative surfacing offers a different approach for branding your business or organisation. By marking a parking area or company entrance with corporate colours, logos or symbols, you can welcome visitors in style. This can help direct guests in the right direction, and at the same time support your brand.

#### Areas of application



Public areas



Playgrounds



Sport & event arenas



Residential



Commercial areas

# Accessibility & safety

Safe-proofing exposed areas and guiding the visually impaired safely on their way

When it comes to ensuring the safety of pedestrians and visually impaired, there are special considerations to be made. It is not easy for all to move safely around in busy and bustling environments, we offer a wide selection of accessibility products, that guide the visually impaired safely on their journey and thereby improves their quality of life.

We have a wide offering of contrasting anti-slip products that ensure safety for pedestrians, whether that be on stairs at stadiums or train stations or be in industrial environments or commercial areas.

Our offering is suitable for all environments, where extra safety is needed or where some or extra exposed, whether that be on stairs, steps, or in the streets.

## Increasing safety one step at a time

Stairs are a good example of a place with several potential hazards that are both accessibility and safety related. Steps can be accentuating with anti-skid markings in a contrasting colour. This makes it easier to visually differentiate each step and also reduces the risk of slip-and-fall accidents.

### What is accessibility?

Given their disability, visual impaired people often need additional orientation aids to be able to move around safely when traveling alone. For this purpose, our tactile markings are an ideal solution.

While the ribbed TacGuide is for guiding, the domed TacPad is for creating attention or warning about a hazardous area. This could be that you are at a flight of stairs or close to railway tracks, and therefore should proceed with caution. TacPad and TacGuide are produced in different materials and offer different application techniques, so it fits your application and use need. Cutting the material is easy and makes it possible to shape it around curves or street furniture if necessary.



### Stations, stops and piers

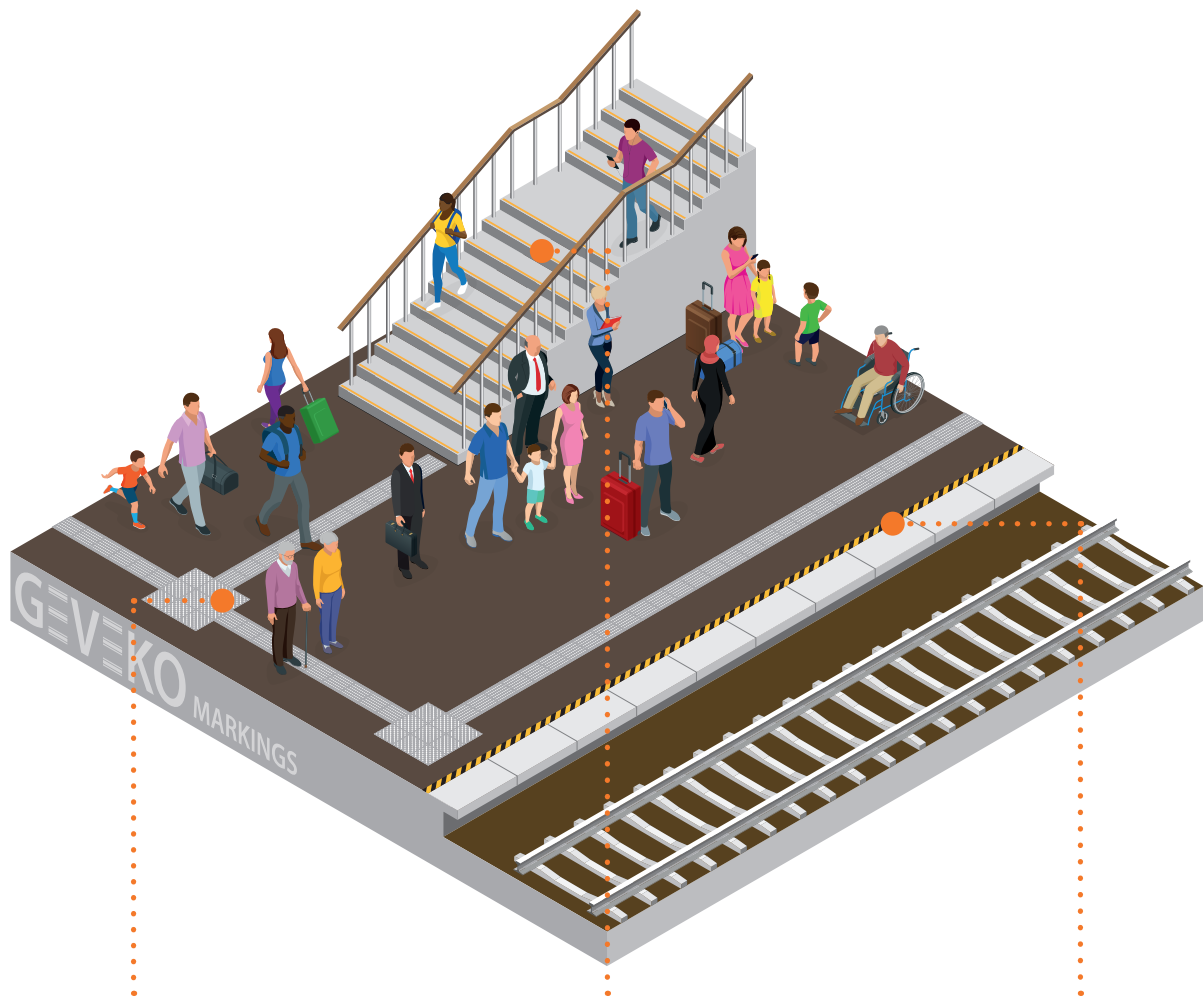
Safety is not something that should be taken lightly, especially in regards to public transport. Here you want to use not only permanent, durable markings, but also markings with anti-slip properties.

We offer a full range of products that provides a skid-resistant surface that prevents the markings from becoming slippery, offering the level of safety you'd expect from premium markings.



## The solution

All you need for your accessibility and safety requirements



### WALKWAYS AND TACTILE MARKINGS

We offer two different types of tiles which make it possible to navigate the streets in a safe and comfortable way - TacPad™ and TacGuide™. With each of their tactile properties, these markings can help guide visually impaired people and provide slip- and skid-resistant surfaces for improved safety.

### STEPS AND STAIRS

Slippery steps can be the cause of serious accidents - but these can be avoided with GripTech™ T-Grip. This preformed thermoplastic marking has particularly strong anti-skid properties and is highly recommended for accentuating steps and for safe-proving slippery substrates all around.

### WARNING AND RESTRICTIONS

It is important to keep people informed about areas that are particularly dangerous - especially if there is restricted access. For these areas, GripTech™ T-Grip is a clear-cut solution. The preformed material is easy to apply and the eye-catching black and yellow colours demand attention as required to keep people alert.

#### Areas of application



Transport stations



Commercial areas



Industrial areas



Sport & event arenas



Public spaces



# Road & surface repair

Prolonging the life of damaged roads with fast and easy road maintenance

To keep our roads safe, proper maintenance is required. This not only helps limit the risk of extended damages, but also decrease the need for more extensive and costly repairs. Most importantly, regular road repairs prolong the lifetime of the road and increases safety.

costly projects. Easy-to-carry bags and buckets combined with simple and fast application processes means that your repairs can often be done in a matter of minutes, reducing cost of repairs and annoyance to road-users.

At Geveko Markings, we have developed a complete solution for road and surface repair. It consists of four different and combinable products which makes it easy for you to repair potholes, cracks, and damages before they turn into big and

## The complete repair solution

With almost 100 years of experience in road markings and innovation, Geveko Markings has developed a range of road and surface repair products for easy, efficient and durable application. Our solution consists of four different and combinable products which makes it easy for you to repair potholes, cracks and outbreaks before they turn into big and costly projects.

Easy-to-carry bags and buckets combined with a simple application process means that this solution requires a minimum amount of resources. You can simply have the products on your vehicle and easily repair damages on the road as you see them - all year round.



## Maximise your repairs – minimise your effort

Compared to methods that demand a lot of manpower and heavy or specialised equipment this is a both user-friendly and cost-effective solution.

With a minimum of equipment required, you reduce the risk of causing secondary damages adjacent to the repair. Furthermore, you limit closing time of traffic during road maintenance as the repairs can be done very quickly.



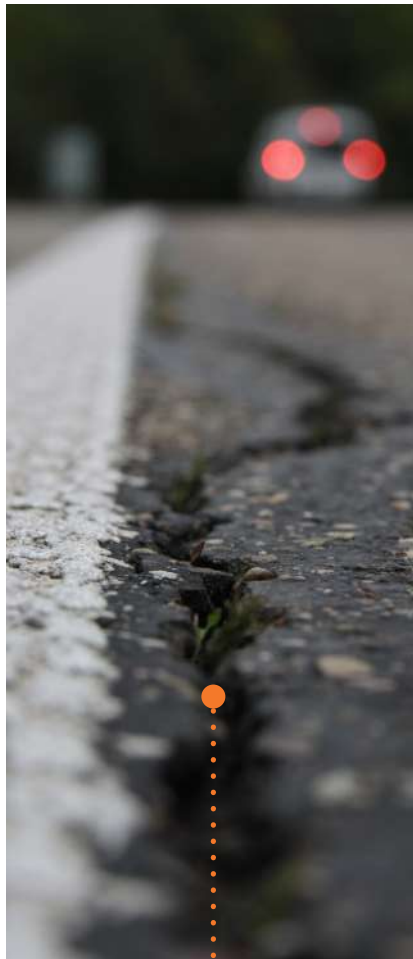
## The solution

All you need for your road and surface repair requirements



### POTHOLES

Potholes on the road can be safety hazards and must be attended to quickly in order to avoid accidents. Depending on the size of the road damage, we recommend using our hot-applied surface defect repair ChipFill™ on its own or in combination with AggreFill™. These two specially designed products provide a fast and easy repair of the road with a minimal downtime of traffic.



### CRACKS

Sometimes the road is in need of a helping hand. In these situations, BandFill™ provides an efficient "first aid". These light weight strips with high anti-skid properties can be used for sealing cracks in the road surface as well as the edges of repaired asphalt areas. The flexible product is available in both lines and rolls - depending on the job at hand.



### SURFACE LEVELLING AND IRREGULAR DAMAGES

ColdFill™ is an ideal solution for levelling out larger surfaces that suffers from irregular damages. The self-levelling product ensures a smooth and even surface which is the perfect foundation when applying a preformed marking or one of our liquid materials.

#### Areas of application



Roads



Industrial areas



Commercial areas



Pavements & Drives



## Events, sports & specialities

Marking those special occasions to leave a lasting or temporary impression

Sometimes you need markings for special events that lasts for a limited amount of time. For example, markings can be very useful for guiding festival and concert guests to the right places, for giving directions at an outdoor market, or for making sure that runners take the right route at city races. With our range of temporary, easily-applied products, you can mark your desired lines and symbols, and once the event is over, just as easily remove the markings again.

Other special markings demands a longer durability. Social distancing symbols, for instance, are examples of markings that are ideal to make with our preformed materials.

### On track for every race

When it comes to race cars, every minute detail is measured, trialed, and tested before a race. So why demand anything less of your racetrack markings?

At Geveko Markings, we have developed a waterborne marking specifically for the use on racetracks. AquaRoute RaceLine is FIA approved and offers excellent adhesion to the surface, high performance, and fast drying abilities.

What makes this material unique is that it has the same adhesion and friction properties as asphalt. In other words, it eliminates the difference between the coloured areas on the track and the asphalt areas so that the changing surface doesn't affect the driver. Such seemingly small factors are crucial when it comes to car races where every detail and second counts.



### Temporary road markings

Our temporary road marking paints are the go-to solution when it comes to events like city runs or any type of festival, concert or cultural arrangement. By guiding visitors and guests effectively on their way, these markings will get the job done and be easily removed once the event is over.

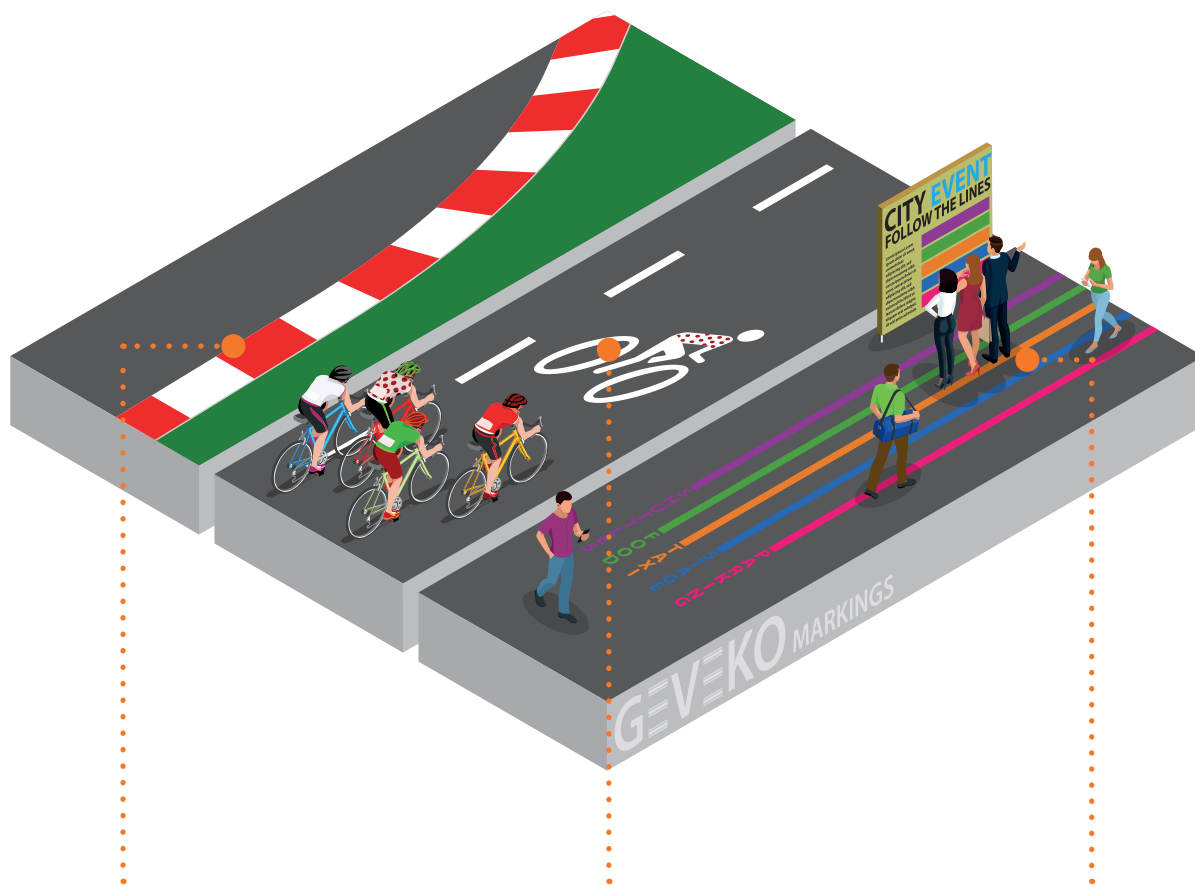
Our waterborne paints are available in a wide range of grades from temporary to high durability. There are no special restrictions in order to work with waterborne paints and they can be applied on both concrete and bituminous surfaces.





## The solution

All you need for your sporting and outdoor event marking requirements



### RACE TRACKS

For a high-performance sport such as auto racing, high-performance markings are needed. Our AquaRoute™ RaceLine is FIA and FIM certified and developed exactly for the purpose offering both high adhesion, performance and fast drying abilities for use on the motor racing circuits.

### SPORTING EVENT

For sporting events such as city runs and cycling races, our temporary markings are a popular solution which fit the purpose perfectly when it comes to mark up the routes and guide participants along the route. Alternatively, our permanent markings, such as PREMARK symbols, can be used to act as a long-lasting reminder about the big event that took place.

### OUTDOOR EVENTS

For outdoor events such as festivals, markets and tourism events, we recommend our temporary paints. Easily mark the placement of stalls and guide visitors effectively around the event with AquaRoute™ Tempi. When the event is over the markings can be easily removed or left to disappear gradually from weathering.

#### Areas of application



Social distancing



Sport routes



Event logistics



Race Tracks

## Our ranges

We provide world class road marking and decorative surfacing solutions



### Preformed

Preformed is ready to use on delivery and can be laid all year round. All horizontal traffic signs, traffic symbols and traffic markings are available in this durable material. It is simple and easy to use as it only requires a brush and a gas burner to be applied. No big investment or machinery is required when choosing preformed as a road marking solution.



### Hot-applied thermoplastic

Geveko Markings manufacture a range of thermoplastic road marking materials which are important to the improvement of road safety and also offer important benefits to the road marking infrastructure. The long lifespan of these markings means a more cost effective way of implementing road markings due to less frequent maintenance or replacement.



### Paints and plural components

Our liquid products cover both our solvent- and water-borne paint as well as our cold plastic product line. Road marking paint provide cost-effective, fast drying lines that are compatible with most surfaces and has long been a part of our extensive range of visible safety marking products. The same goes for our cold plastic materials which is particularly useful for areas with high traffic loads where high visibility is required.



### Road and surface repair

Worn and damaged roads are unfortunately not a rare sight. The formation and shape of these damages may differ greatly and may be a combination of different types of deterioration. Fear of huge costs and long traffic shut-downs can make it seem like an immense project to get these damages fixed. But this does not have to be an issue. We offer a dynamic and scalable selection of road repair solutions for all types of damages.



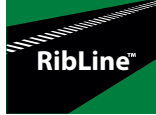
### Beads and aggregate

They may be small in size, but beads and aggregates play an essential part in creating high-quality marking material that meets performance standards. It is used as drop-on on road markings to ensure reach initial visibility and skid resistance or premixed in the material where they provide retroreflection throughout the entire lifetime of the marking.



### Equipment and accessories

In order to achieve optimal application results, you need the right equipment. Therefore, we offer a range of tools that is specifically suited for application of our products. From application machines and burners to the little extra helpers that provide the finishing touches, our range of equipment makes ensure that you always get the best end result.





# Inspiring solutions across the globe

Local commitment on a global scale



Portugal, PlastiRoute™



France, Viadecor™



Holland, DecoMark™



UK, GeoPave™



United States, OPTAMARK™



Chile, PREMARK™



Argentina, PlastiRoute™



Egypt, PREMARK™





**Sweden, DecoMark™**



**Denmark, Vizispot™**



**Italy, ViaTherm™**



**China, PlastiRoute™**



**Korea, PREMARK™**



**Tibet, PlastiRoute™**



**Abu Dhabi, ViaTherm™**



**Australia, PlastiRoute™**



**New Zealand, PlastiRoute™**





**GEVEKO** MARKINGS

[sales@gevekomarkings.com](mailto:sales@gevekomarkings.com) • [www.gevekomarkings.com](http://www.gevekomarkings.com)